



Regions Tower

333 TEXAS STREET, SHREVEPORT, LA 71101

OFFICE SPACE FOR LEASE

Regions Tower is part of Regions Center which is located in the heart of downtown Shreveport. Regions Center is undoubtedly the most prestigious office complex in North Louisiana. TOP 2 PENTHOUSE FLOORS OFFER UP TO 16,646 RSF OF CONTIGUOUS SPACE!! Tenants and their guests enjoy many amenities, some of which include:

- On-site Security Personnel
- Additional Conference Rooms
- Break Room with Vending Machines
- Fitness Center
- Regions Center Atrium and it's 50' waterfall
- Wheelless Conference Center
- Nader's Art Gallery
- Bistro To Go
- On-site Management & Leasing
- Daily Janitorial Service
- Fed Ex, UPS & USPS
- Attached Parking Garage

For Additional Information, Contact:

Beth King | 318-453-6066 | beth@bethkingrealestate.com

333 Texas Street, Suite 2280, Shreveport, Louisiana 71101

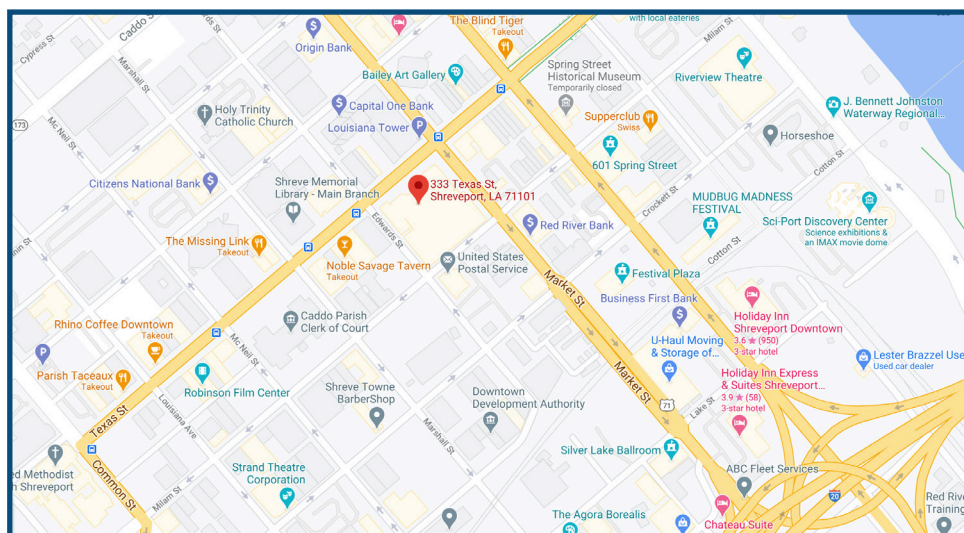
ALL INFORMATION CONTAINED HEREIN IS BELIEVED TO BE ACCURATE, BUT IS NOT WARRANTED AND NO LIABILITY OF ERRORS OR OMISSIONS IS ASSURED BY EITHER THE PROPERTY OWNER OR BETH KING REAL ESTATE, LLC OR ITS AGENTS AND EMPLOYEES. PRICES AS STATED HEREIN AND PRODUCT AVAILABILITY IS SUBJECT TO CHANGE AND/OR SALE OR LEASE WITHOUT PRIOR NOTICE, AND ALL SIZES AND DIMENSIONS ARE SUBJECT TO CORRECTION. 02/2021



Regions Tower

333 TEXAS STREET, SHREVEPORT, LA 71101

OFFICE SPACE FOR LEASE



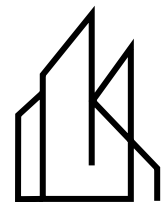
For Additional Information, Contact:

Beth King | 318-453-6066 | beth@bethkingrealestate.com

333 Texas Street, Suite 2280, Shreveport, Louisiana 71101

ALL INFORMATION CONTAINED HEREIN IS BELIEVED TO BE ACCURATE, BUT IS NOT WARRANTED AND NO LIABILITY OF ERRORS OR OMISSIONS IS ASSURED BY EITHER THE PROPERTY OWNER OR BETH KING REAL ESTATE, LLC OR ITS AGENTS AND EMPLOYEES. PRICES AS STATED HEREIN AND PRODUCT AVAILABILITY IS SUBJECT TO CHANGE AND/OR SALE OR LEASE WITHOUT PRIOR NOTICE, AND ALL SIZES AND DIMENSIONS ARE SUBJECT TO CORRECTION. 02/2021

p2



BETHKING
REAL ESTATE, LLC

Regions Tower

333 TEXAS STREET, SHREVEPORT, LA 71101
OFFICE SPACE FOR LEASE



For Additional Information, Contact:

Beth King | 318-453-6066 | beth@bethkingrealestate.com
333 Texas Street, Suite 2280, Shreveport, Louisiana 71101

ALL INFORMATION CONTAINED HEREIN IS BELIEVED TO BE ACCURATE, BUT IS NOT WARRANTED AND NO LIABILITY OF ERRORS OR OMISSIONS IS ASSURED BY EITHER THE PROPERTY OWNER OR BETH KING REAL ESTATE, LLC OR ITS AGENTS AND EMPLOYEES. PRICES AS STATED HEREIN AND PRODUCT AVAILABILITY IS SUBJECT TO CHANGE AND/OR SALE OR LEASE WITHOUT PRIOR NOTICE, AND ALL SIZES AND DIMENSIONS ARE SUBJECT TO CORRECTION. 02/2021

p3



Regions Tower

333 TEXAS STREET, SHREVEPORT, LA 71101
OFFICE SPACE FOR LEASE



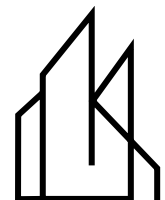
For Additional Information, Contact:

Beth King | 318-453-6066 | beth@bethkingrealestate.com

333 Texas Street, Suite 2280, Shreveport, Louisiana 71101

ALL INFORMATION CONTAINED HEREIN IS BELIEVED TO BE ACCURATE, BUT IS NOT WARRANTED AND NO LIABILITY OF ERRORS OR OMISSIONS IS ASSURED BY EITHER THE PROPERTY OWNER OR BETH KING REAL ESTATE, LLC OR ITS AGENTS AND EMPLOYEES. PRICES AS STATED HEREIN AND PRODUCT AVAILABILITY IS SUBJECT TO CHANGE AND/OR SALE OR LEASE WITHOUT PRIOR NOTICE, AND ALL SIZES AND DIMENSIONS ARE SUBJECT TO CORRECTION. 02/2021

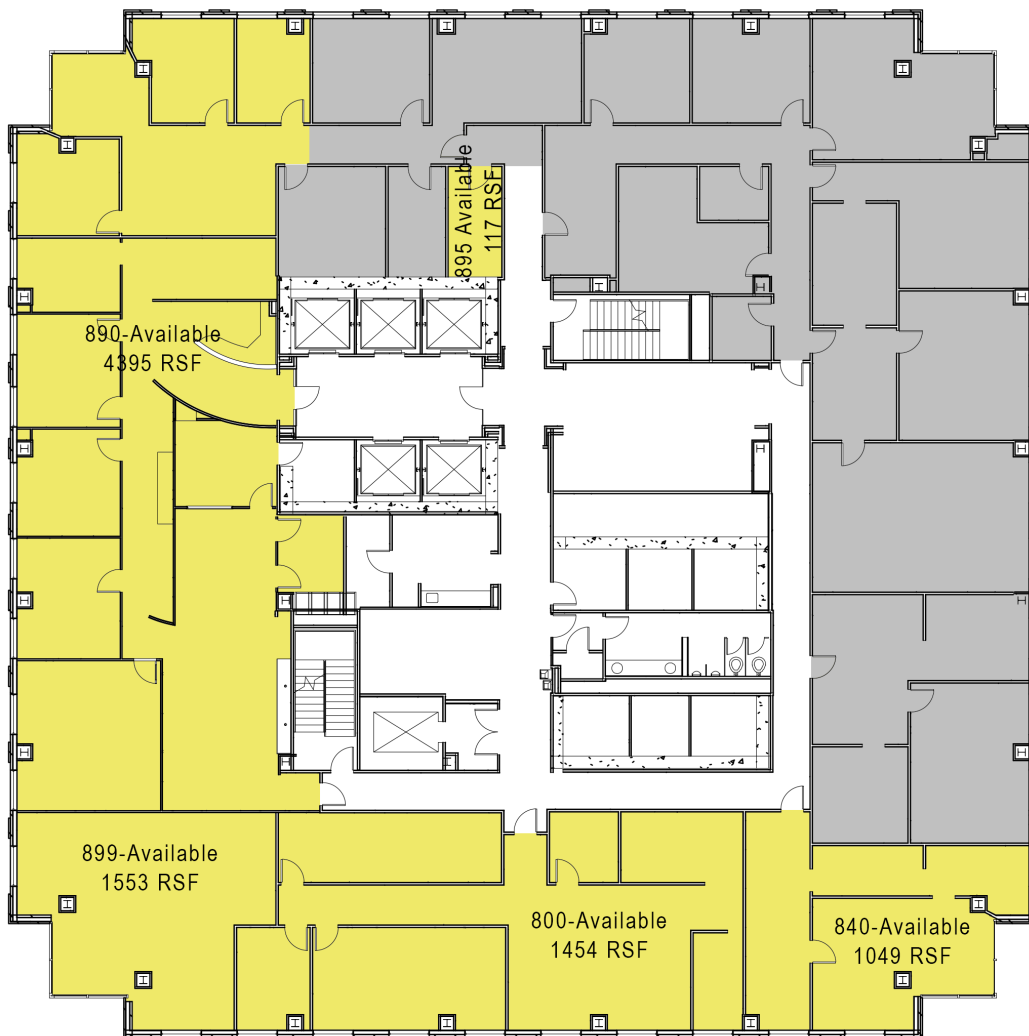
p4



BETHKING
REAL ESTATE, LLC

Regions Tower

333 TEXAS STREET, SHREVEPORT, LA 71101
OFFICE SPACE FOR LEASE



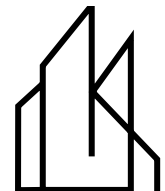
For Additional Information, Contact:

Beth King | 318-453-6066 | beth@bethkingrealestate.com

333 Texas Street, Suite 2280, Shreveport, Louisiana 71101

ALL INFORMATION CONTAINED HEREIN IS BELIEVED TO BE ACCURATE, BUT IS NOT WARRANTED AND NO LIABILITY OF ERRORS OR OMISSIONS IS ASSURED BY EITHER THE PROPERTY OWNER OR BETH KING REAL ESTATE, LLC OR ITS AGENTS AND EMPLOYEES. PRICES AS STATED HEREIN AND PRODUCT AVAILABILITY IS SUBJECT TO CHANGE AND/OR SALE OR LEASE WITHOUT PRIOR NOTICE, AND ALL SIZES AND DIMENSIONS ARE SUBJECT TO CORRECTION. 02/2021

p5



BETHKING
REAL ESTATE, LLC

Regions Tower

333 TEXAS STREET, SHREVEPORT, LA 71101
OFFICE SPACE FOR LEASE



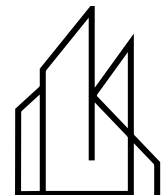
For Additional Information, Contact:

Beth King | 318-453-6066 | beth@bethkingrealestate.com

333 Texas Street, Suite 2280, Shreveport, Louisiana 71101

ALL INFORMATION CONTAINED HEREIN IS BELIEVED TO BE ACCURATE, BUT IS NOT WARRANTED AND NO LIABILITY OF ERRORS OR OMISSIONS IS ASSURED BY EITHER THE PROPERTY OWNER OR BETH KING REAL ESTATE, LLC OR ITS AGENTS AND EMPLOYEES. PRICES AS STATED HEREIN AND PRODUCT AVAILABILITY IS SUBJECT TO CHANGE AND/OR SALE OR LEASE WITHOUT PRIOR NOTICE, AND ALL SIZES AND DIMENSIONS ARE SUBJECT TO CORRECTION. 02/2021

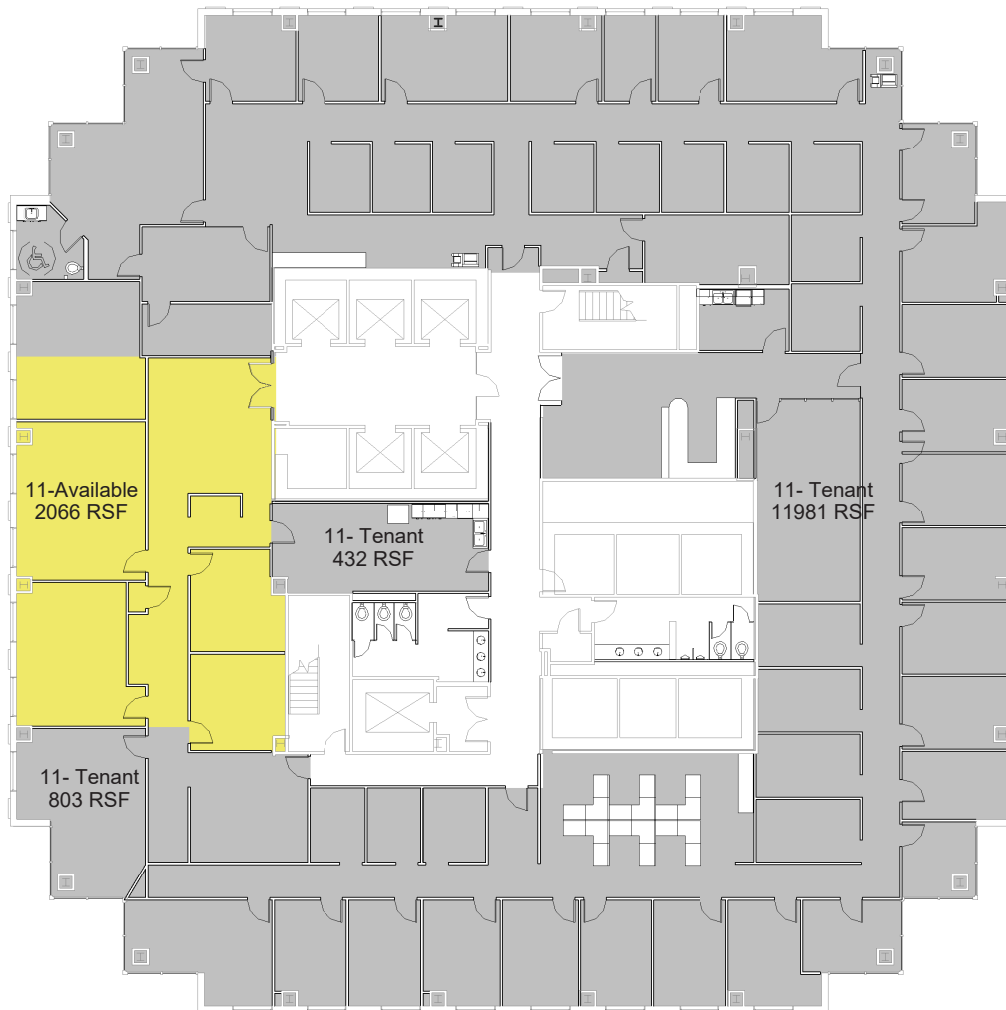
p6



BETHKING
REAL ESTATE, LLC

Regions Tower

333 TEXAS STREET, SHREVEPORT, LA 71101
OFFICE SPACE FOR LEASE



For Additional Information, Contact:

Beth King | 318-453-6066 | beth@bethkingrealestate.com
333 Texas Street, Suite 2280, Shreveport, Louisiana 71101

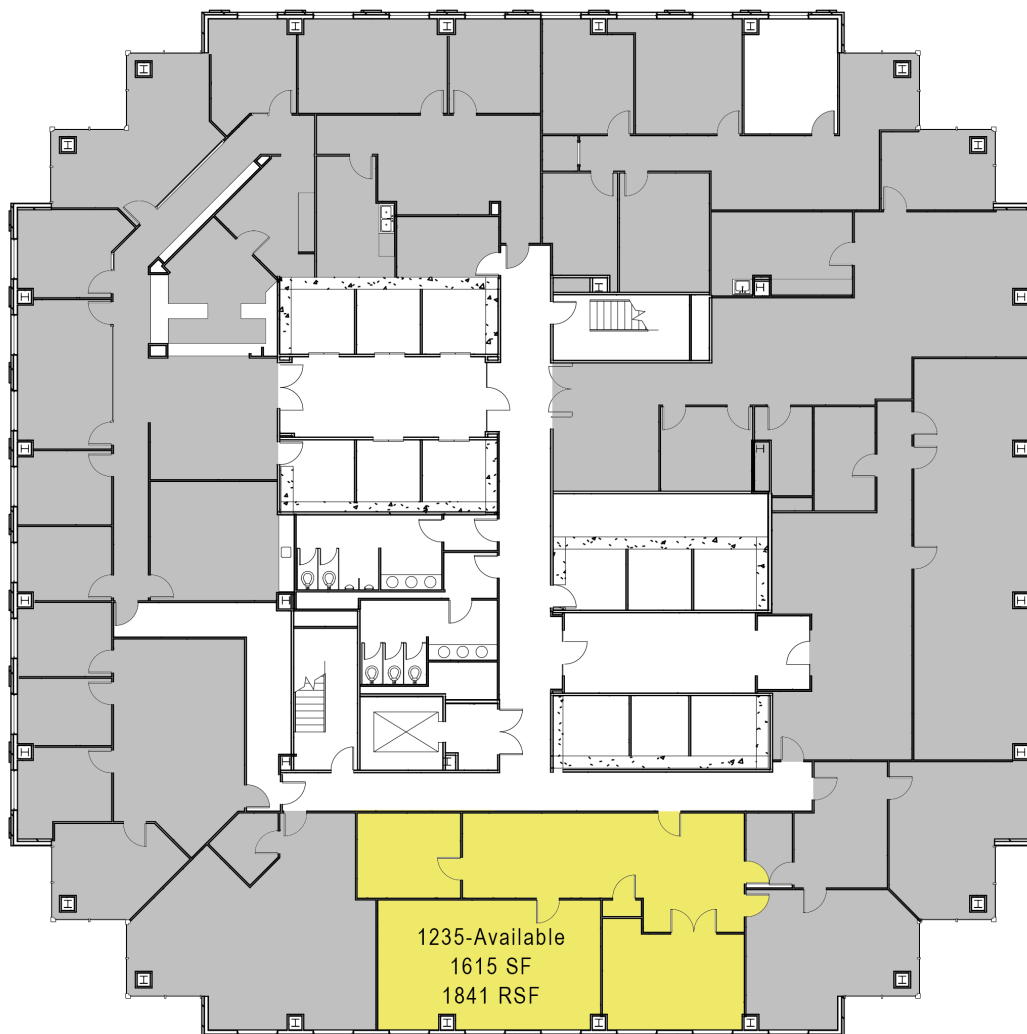
ALL INFORMATION CONTAINED HEREIN IS BELIEVED TO BE ACCURATE, BUT IS NOT WARRANTED AND NO LIABILITY OF ERRORS OR OMISSIONS IS ASSURED BY EITHER THE PROPERTY OWNER OR BETH KING REAL ESTATE, LLC OR ITS AGENTS AND EMPLOYEES. PRICES AS STATED HEREIN AND PRODUCT AVAILABILITY IS SUBJECT TO CHANGE AND/OR SALE OR LEASE WITHOUT PRIOR NOTICE, AND ALL SIZES AND DIMENSIONS ARE SUBJECT TO CORRECTION. 02/2021

p7



Regions Tower

333 TEXAS STREET, SHREVEPORT, LA 71101
OFFICE SPACE FOR LEASE



For Additional Information, Contact:

Beth King | 318-453-6066 | beth@bethkingrealestate.com
333 Texas Street, Suite 2280, Shreveport, Louisiana 71101

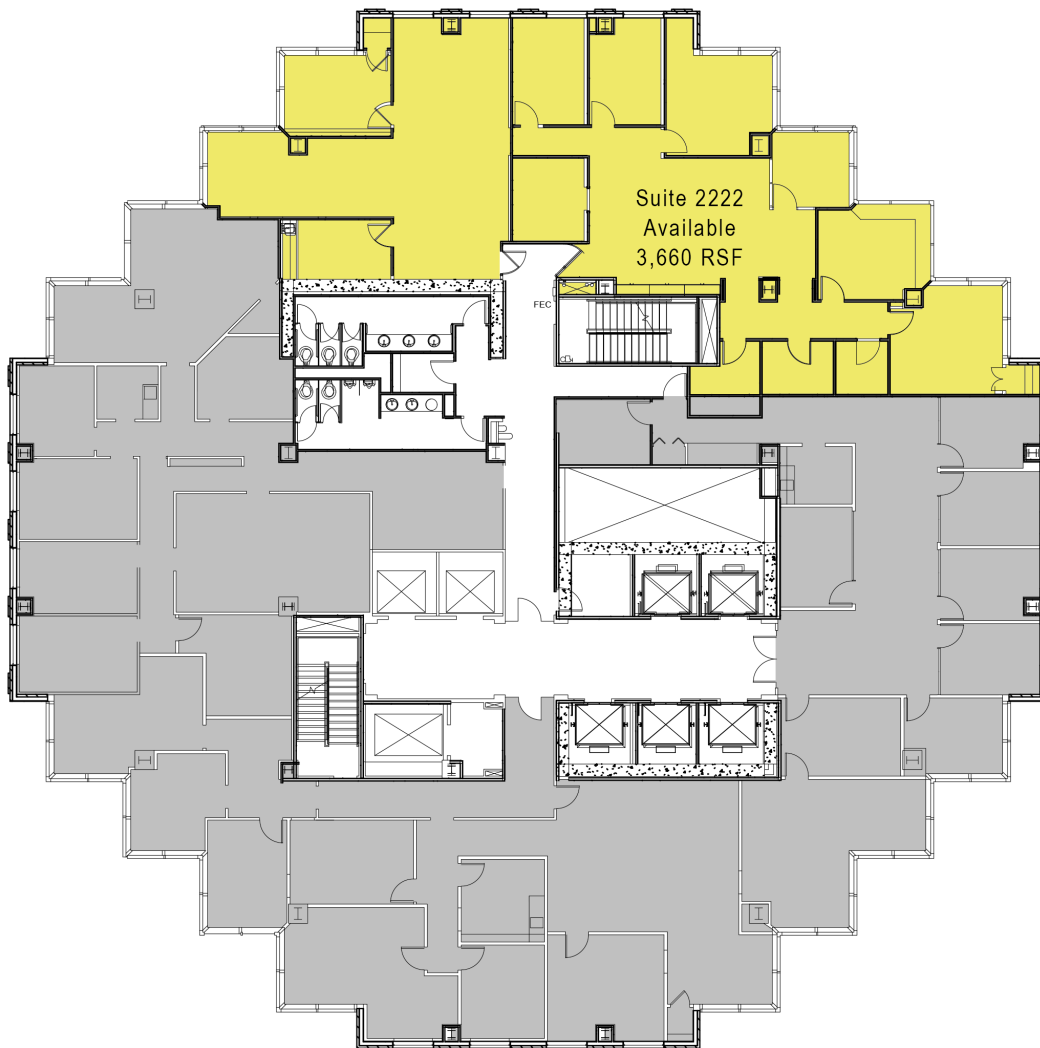
ALL INFORMATION CONTAINED HEREIN IS BELIEVED TO BE ACCURATE, BUT IS NOT WARRANTED AND NO LIABILITY OF ERRORS OR OMISSIONS IS ASSURED BY EITHER THE PROPERTY OWNER OR BETH KING REAL ESTATE, LLC OR ITS AGENTS AND EMPLOYEES. PRICES AS STATED HEREIN AND PRODUCT AVAILABILITY IS SUBJECT TO CHANGE AND/OR SALE OR LEASE WITHOUT PRIOR NOTICE, AND ALL SIZES AND DIMENSIONS ARE SUBJECT TO CORRECTION. 02/2021

p8



Regions Tower

333 TEXAS STREET, SHREVEPORT, LA 71101
OFFICE SPACE FOR LEASE



For Additional Information, Contact:

Beth King | 318-453-6066 | beth@bethkingrealestate.com
333 Texas Street, Suite 2280, Shreveport, Louisiana 71101

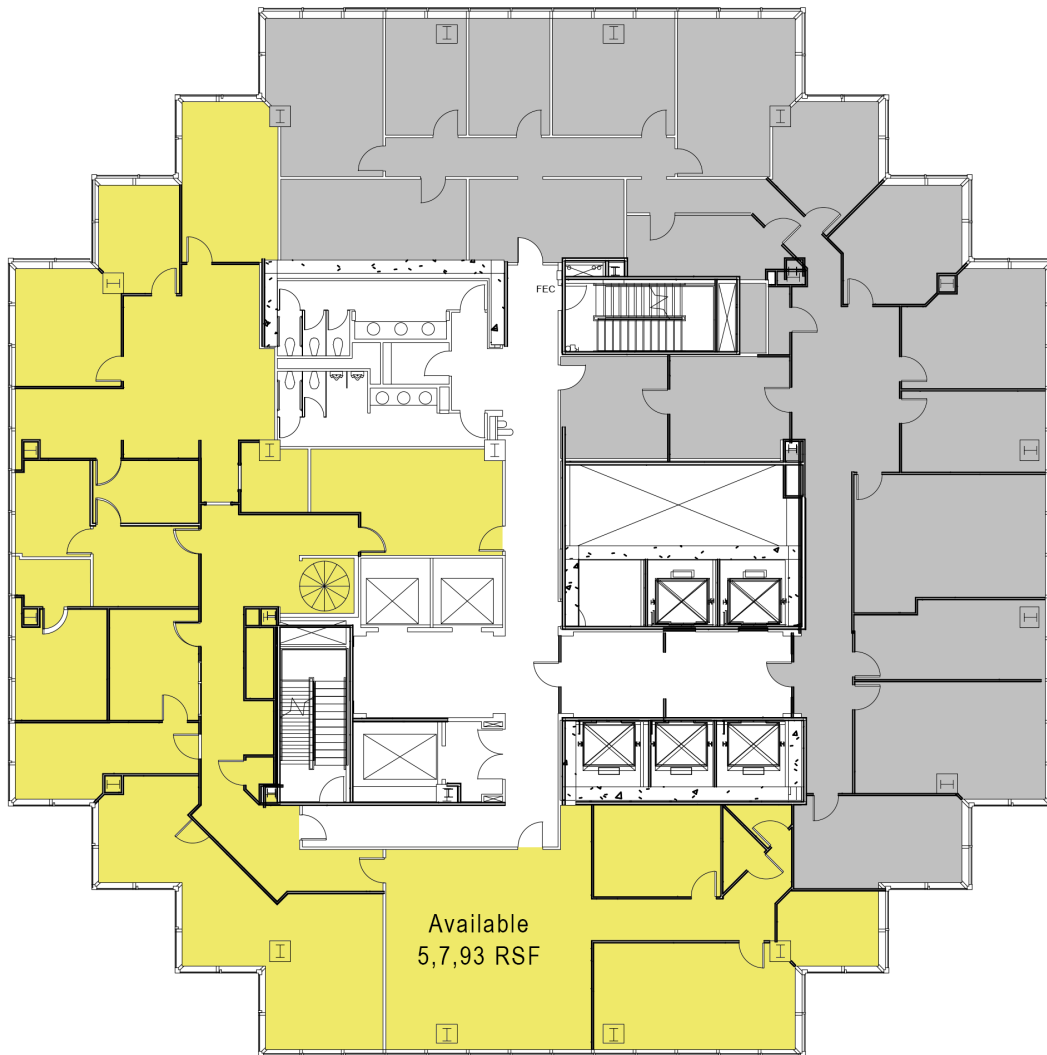
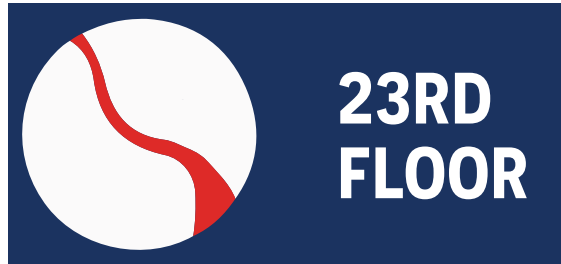
ALL INFORMATION CONTAINED HEREIN IS BELIEVED TO BE ACCURATE, BUT IS NOT WARRANTED AND NO LIABILITY OF ERRORS OR OMISSIONS IS ASSURED BY EITHER THE PROPERTY OWNER OR BETH KING REAL ESTATE, LLC OR ITS AGENTS AND EMPLOYEES. PRICES AS STATED HEREIN AND PRODUCT AVAILABILITY IS SUBJECT TO CHANGE AND/OR SALE OR LEASE WITHOUT PRIOR NOTICE, AND ALL SIZES AND DIMENSIONS ARE SUBJECT TO CORRECTION. 02/2021

p9



Regions Tower

333 TEXAS STREET, SHREVEPORT, LA 71101
OFFICE SPACE FOR LEASE



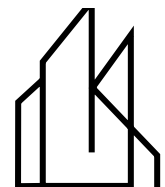
For Additional Information, Contact:

Beth King | 318-453-6066 | beth@bethkingrealestate.com

333 Texas Street, Suite 2280, Shreveport, Louisiana 71101

ALL INFORMATION CONTAINED HEREIN IS BELIEVED TO BE ACCURATE, BUT IS NOT WARRANTED AND NO LIABILITY OF ERRORS OR OMISSIONS IS ASSURED BY EITHER THE PROPERTY OWNER OR BETH KING REAL ESTATE, LLC OR ITS AGENTS AND EMPLOYEES. PRICES AS STATED HEREIN AND PRODUCT AVAILABILITY IS SUBJECT TO CHANGE AND/OR SALE OR LEASE WITHOUT PRIOR NOTICE, AND ALL SIZES AND DIMENSIONS ARE SUBJECT TO CORRECTION. 02/2021

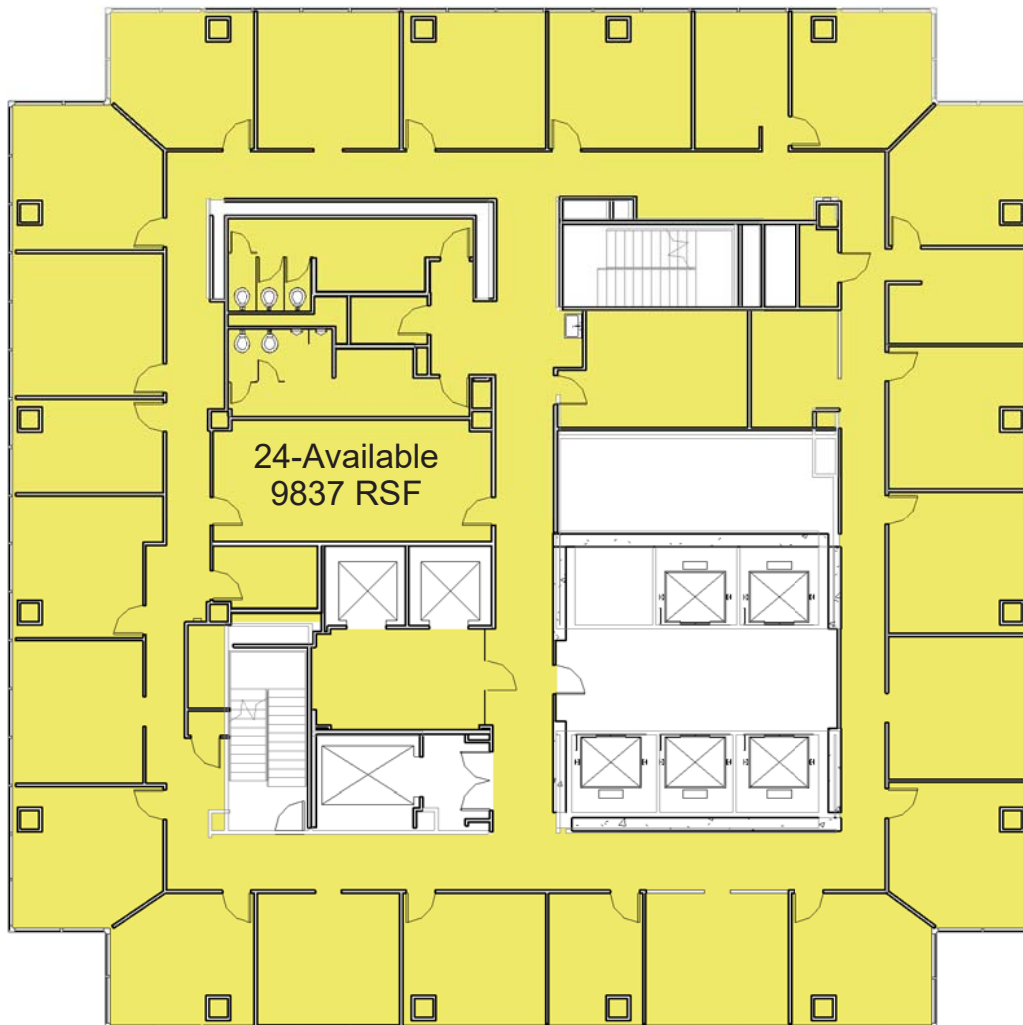
p10



BETHKING
REAL ESTATE, LLC

Regions Tower

333 TEXAS STREET, SHREVEPORT, LA 71101
OFFICE SPACE FOR LEASE



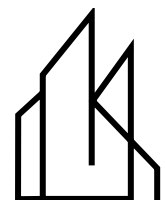
For Additional Information, Contact:

p11

Beth King | 318-453-6066 | beth@bethkingrealestate.com

333 Texas Street, Suite 2280, Shreveport, Louisiana 71101

ALL INFORMATION CONTAINED HEREIN IS BELIEVED TO BE ACCURATE, BUT IS NOT WARRANTED AND NO LIABILITY OF ERRORS OR OMISSIONS IS ASSURED BY EITHER THE PROPERTY OWNER OR BETH KING REAL ESTATE, LLC OR ITS AGENTS AND EMPLOYEES. PRICES AS STATED HEREIN AND PRODUCT AVAILABILITY IS SUBJECT TO CHANGE AND/OR SALE OR LEASE WITHOUT PRIOR NOTICE, AND ALL SIZES AND DIMENSIONS ARE SUBJECT TO CORRECTION. 02/2021



BETHKING
REAL ESTATE, LLC